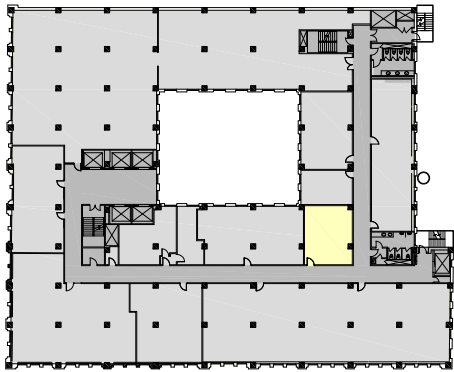


## Sixth Floor

Suite 614

588 RSF



North

Key Plan

### FOR INFORMATION CONTACT:

**CHRISTOPHER T. CASSATA**

Phone: 312.297.7629

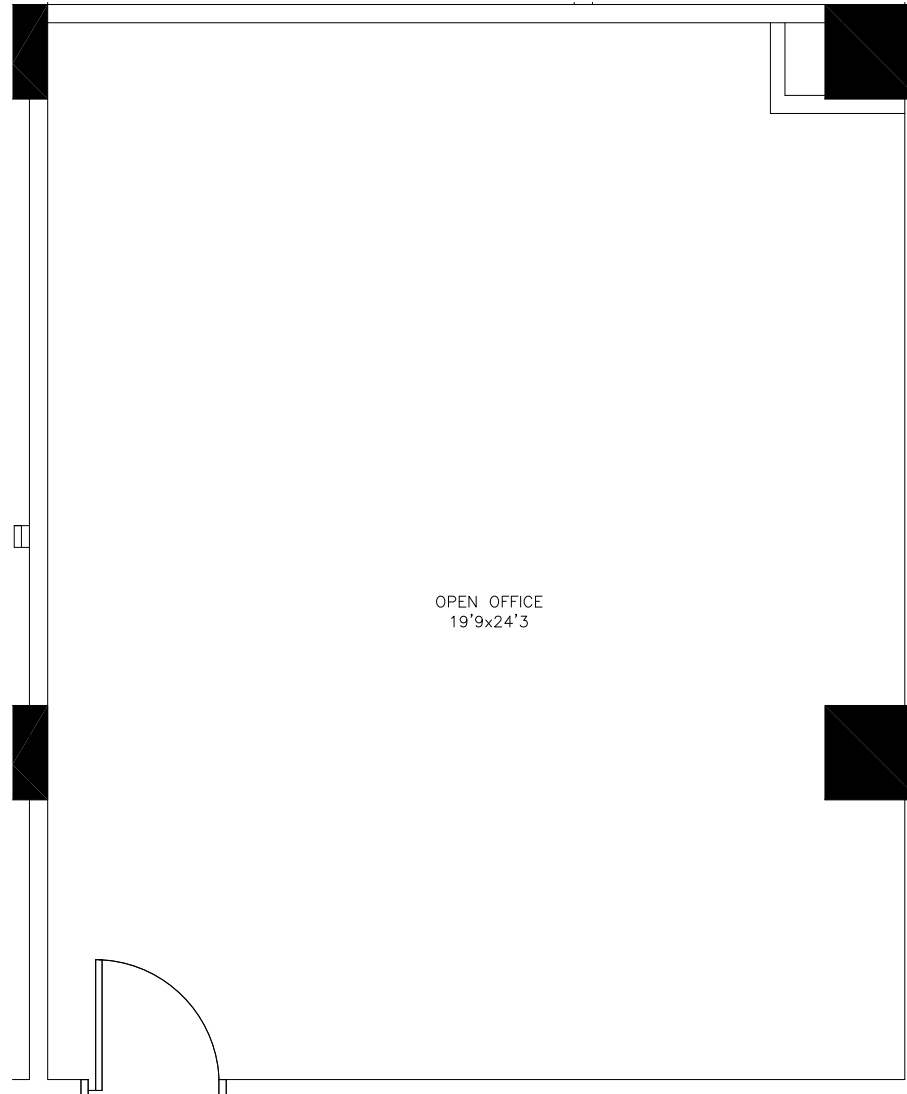
chris.cassata@cbre.com

**ROY ENDSLEY**

300 West Adams Management, LLC

Phone: 312.920.0663 Fax: 312.920.0676

E-mail: rendsley@300adams.com



OPEN OFFICE  
19'9"x24'3"

Existing Conditions Plan

Not To Scale

Room Sizes Are Approximate



Fitzgerald Earles Architects, Inc.  
1820 W. Hubbard, Suite 320 | Chicago, IL 60622  
312.491.9840 | Fax 312.491.9844