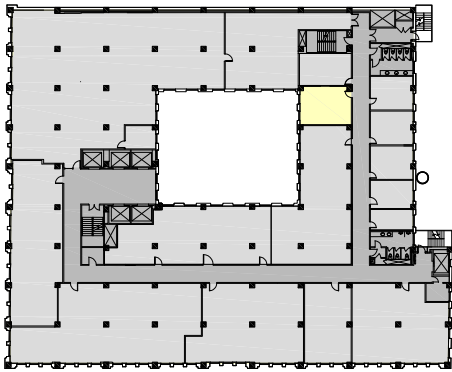


Fourth Floor
Suite 406
419 RSF



North

Key Plan

FOR INFORMATION CONTACT:

CHRISTOPHER T. CASSATA

Phone: 312.297.7629

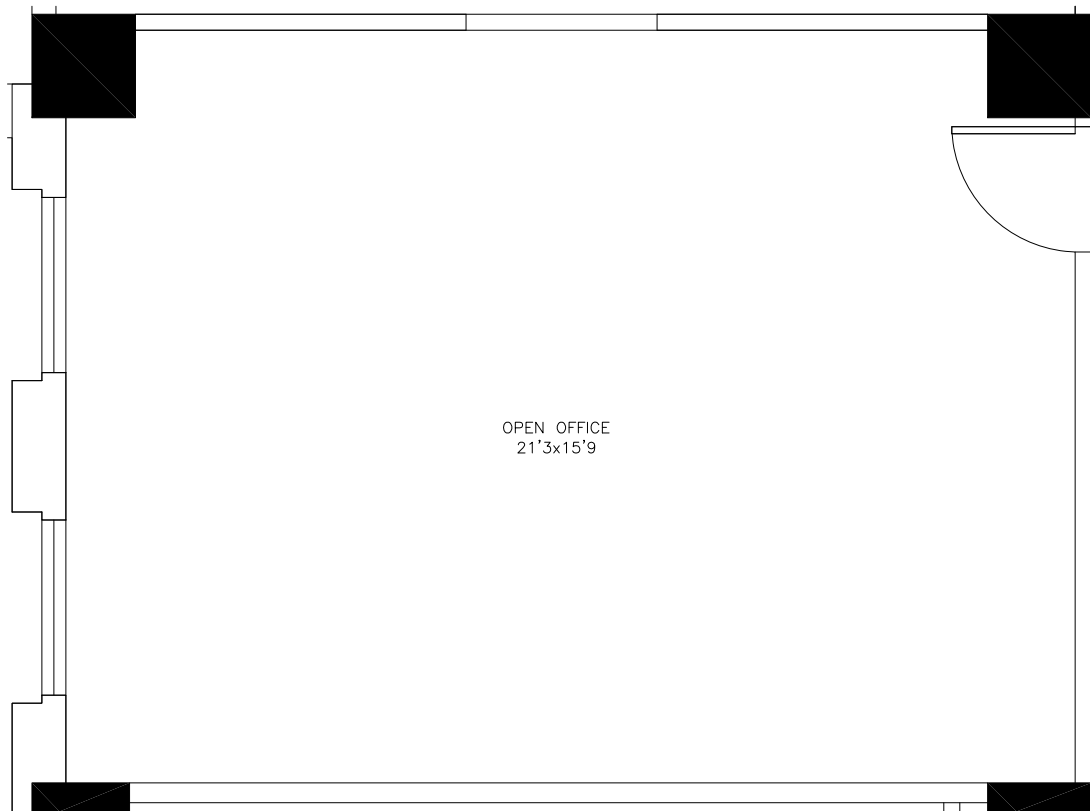
chris.cassata@cbre.com

ROY ENDSLEY

300 West Adams Management, LLC

Phone: 312.920.0663 Fax: 312.920.0676

E-mail: rendsley@300adams.com



OPEN OFFICE
21'3"x15'9"

Existing Conditions Plan
Not To Scale
Room Sizes Are Approximate



Fitzgerald Earles Architects, Inc.
1820 W. Hubbard, Suite 320 | Chicago, IL 60622
312.491.9840 | Fax 312.491.9844