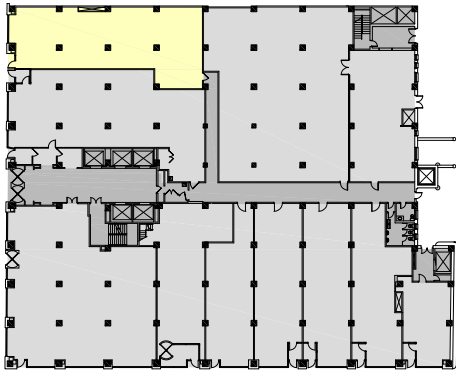
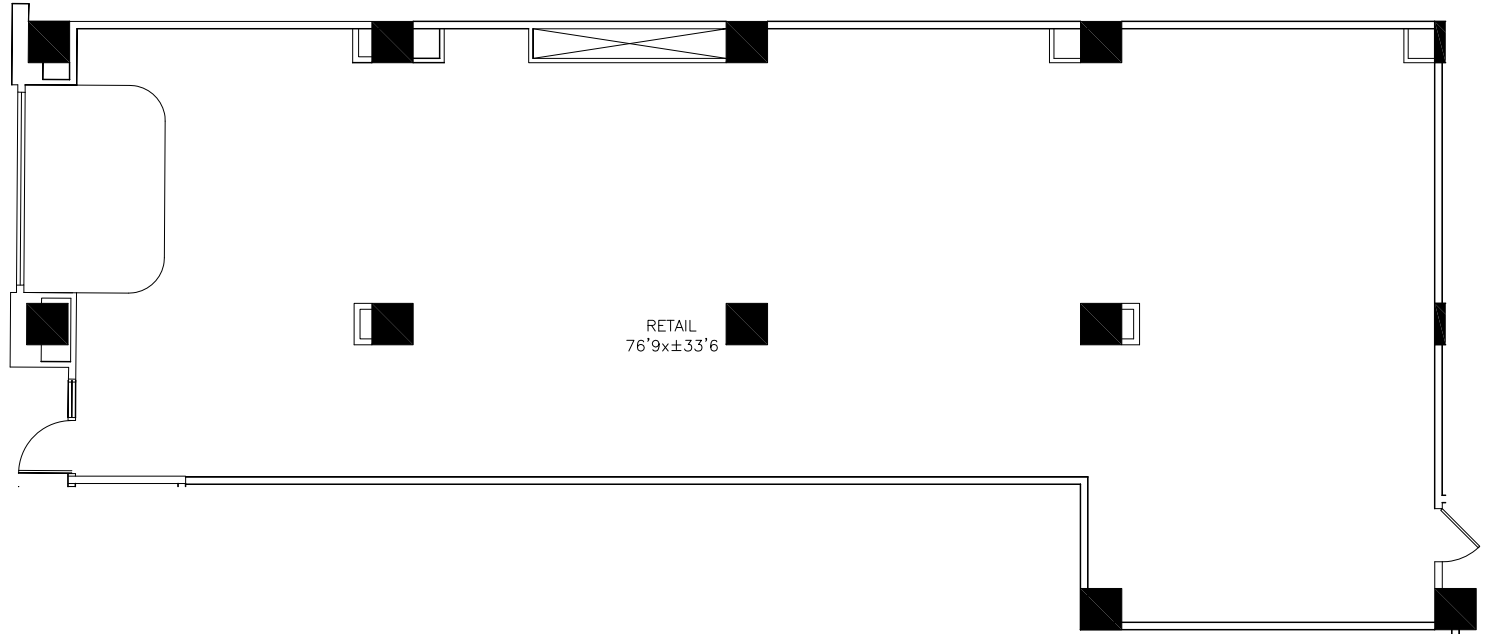


First Floor
Suite 314 W.
2,379 RSF



North

Key Plan



FOR INFORMATION CONTACT:

CHRISTOPHER T. CASSATA

Phone: 312.297.7629

chris.cassata@cbre.com

ROY ENDSLEY

300 West Adams Management, LLC

Phone: 312.920.0663 Fax: 312.920.0676

E-mail: rendsley@300adams.com

Existing Conditions Plan

Not To Scale

Room Sizes Are Approximate



Fitzgerald Earles Architects, Inc.

1820 W. Hubbard, Suite 320 | Chicago, IL 60622

312.491.9840 | Fax 312.491.9844