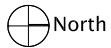
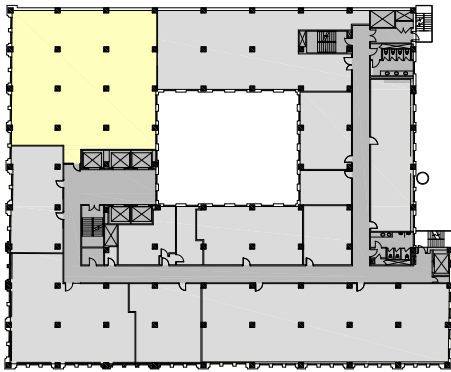


**Sixth Floor**  
Suite 605  
4,137 RSF



Key Plan

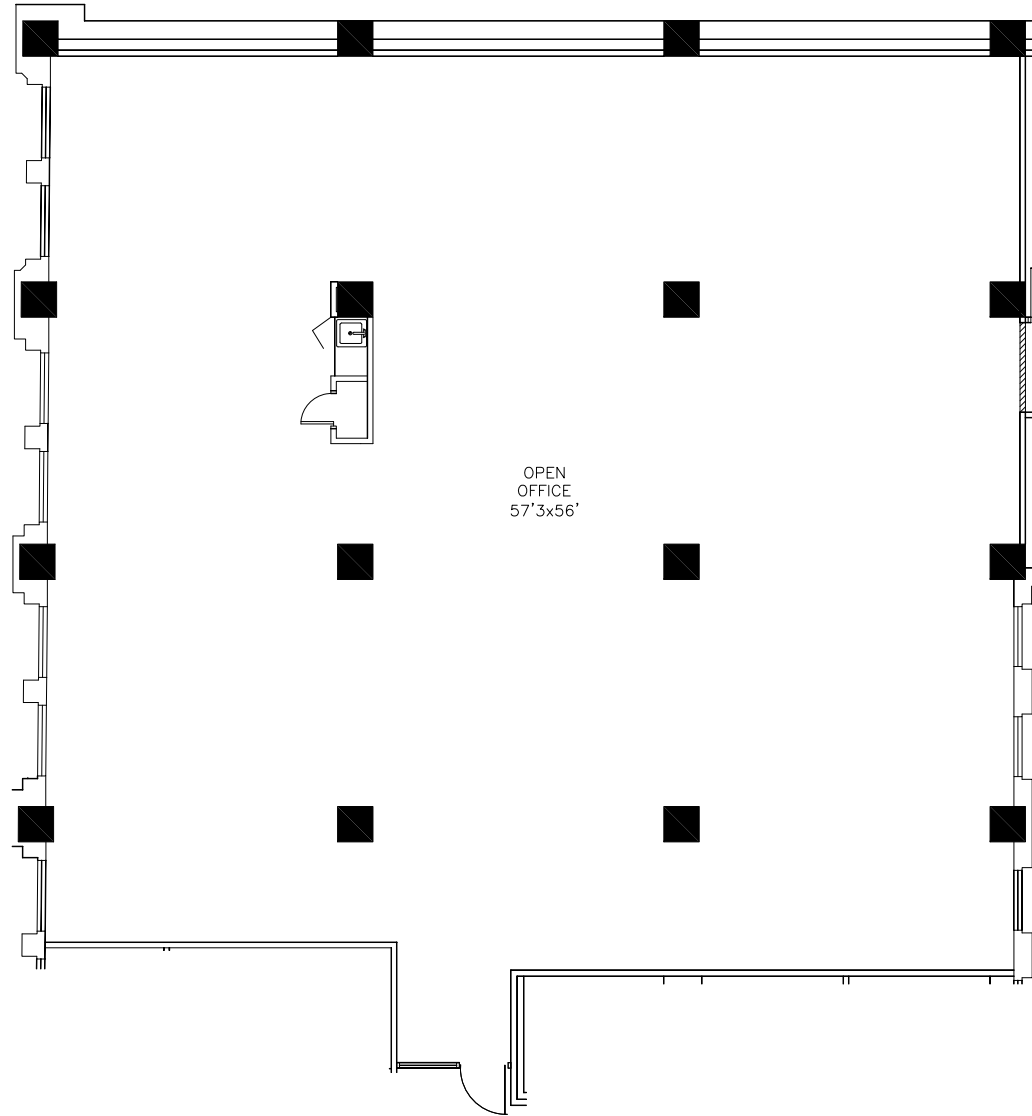
**FOR INFORMATION CONTACT:**

**CHRISTOPHER T. CASSATA**

Phone: 312.297.7629  
chris.cassata@cbre.com

**ROY ENDSLEY**

300 West Adams Management, LLC  
Phone: 312.920.0663 Fax: 312.920.0676  
E-mail: rendsley@300adams.com



**Existing Conditions Plan**  
Not To Scale  
Room Sizes Are Approximate



**Fitzgerald Earles Architects, Inc.**  
1820 W. Hubbard, Suite 320 | Chicago, IL 60622  
312.491.9840 | Fax 312.491.9844